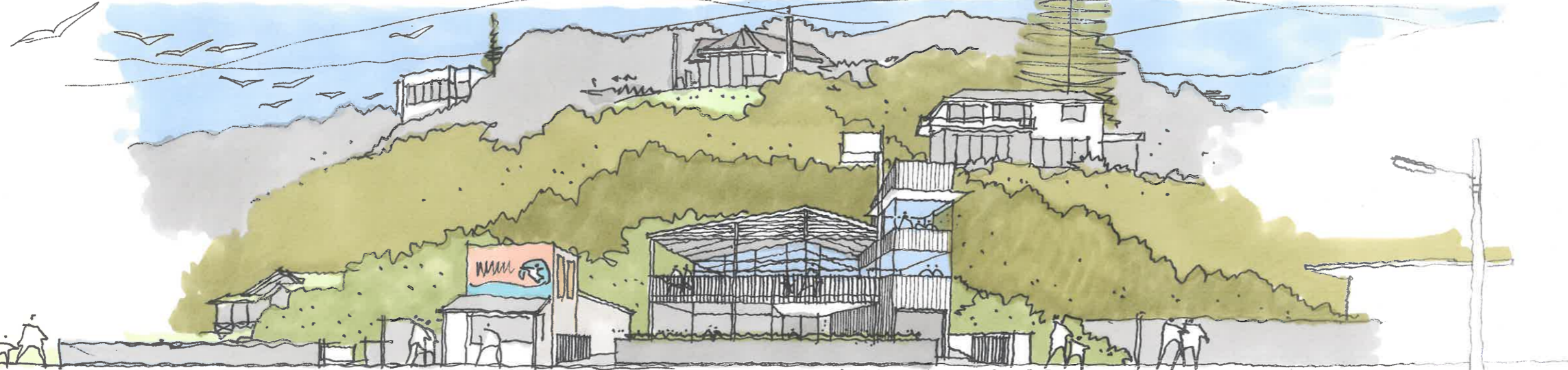
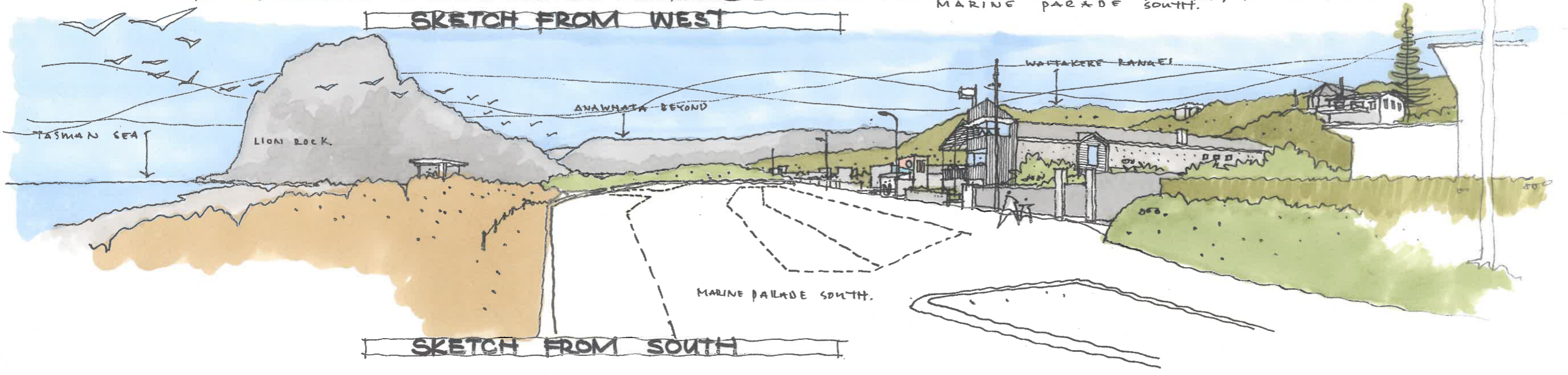


SKETCH FROM NORTH



SKETCH FROM WEST

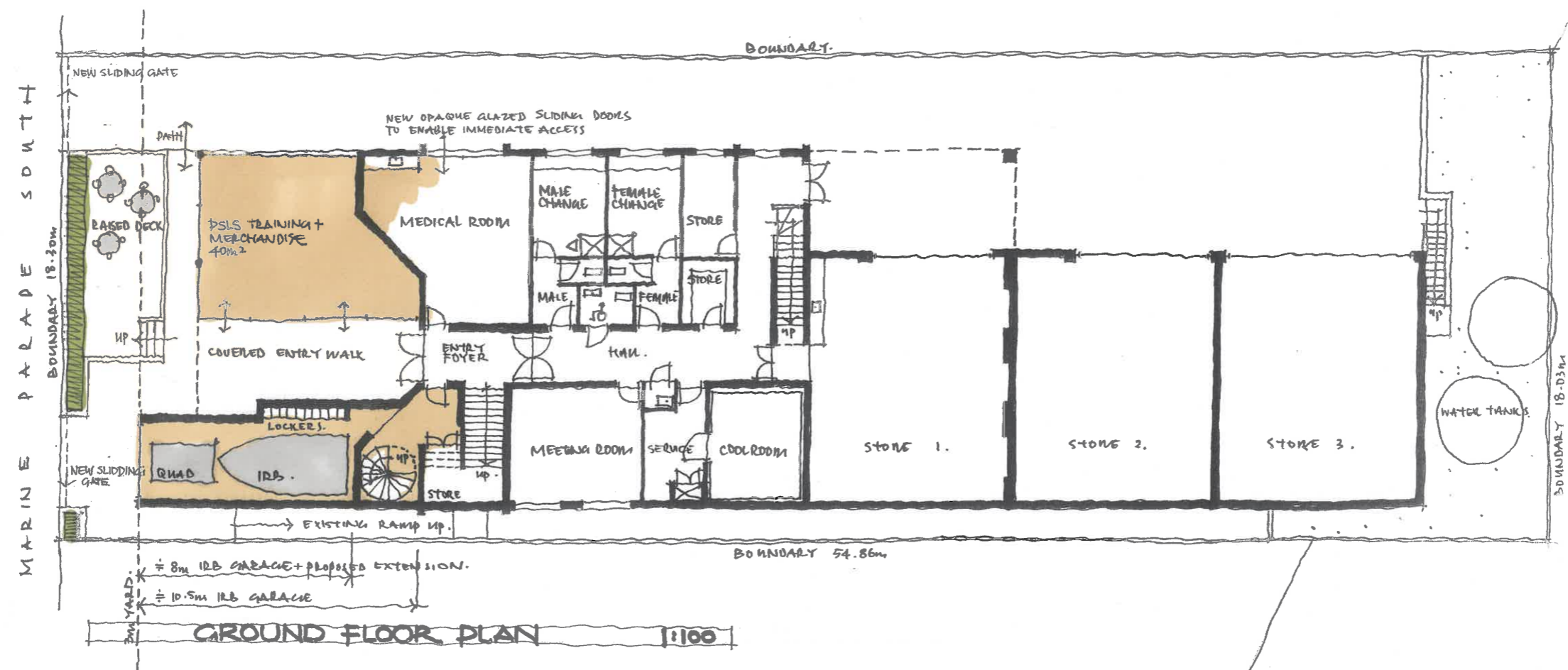
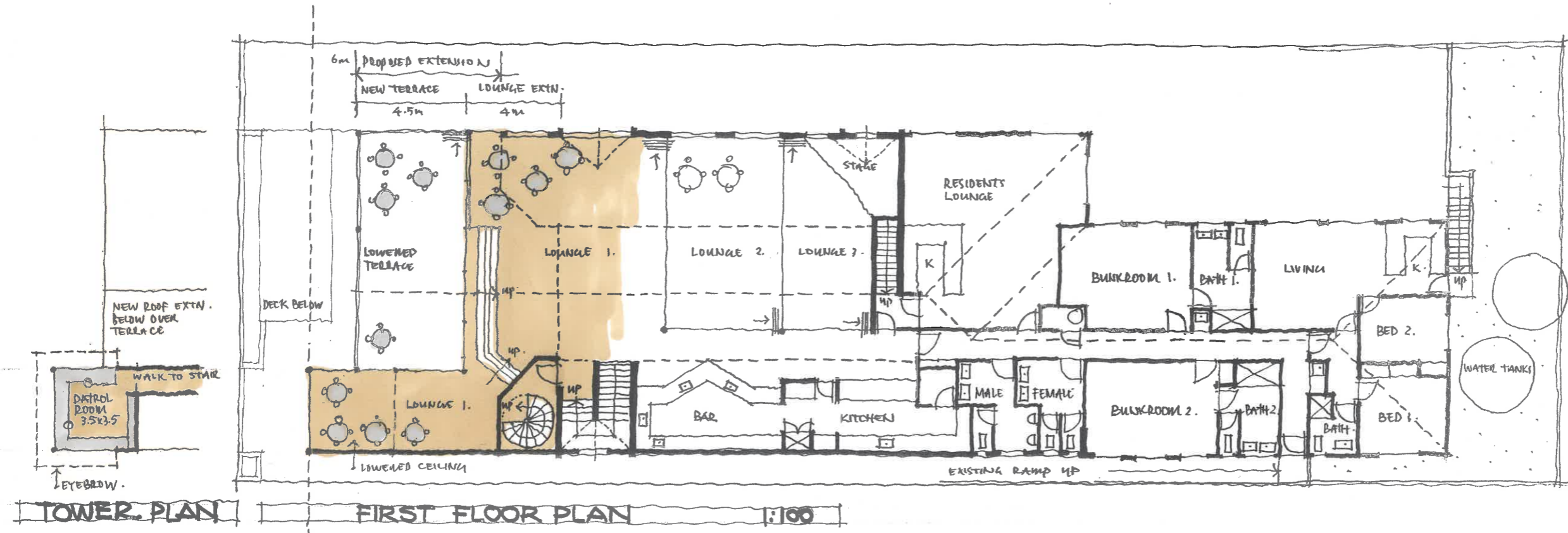


SKETCH FROM SOUTH

PIHA SURF LIFE SAVING CLUB • PROPOSED EXTENSIONS 23 MARINE PARADE SOUTH - PIHA ©28 JUNE 2014 4798-P3

hulena.
 HULENA ARCHITECTS LIMITED
 9 MELROSE STREET
 NEWMARKET
 AUCKLAND
 NEW ZEALAND
 T 09 524 6955
 F 09 520 6522
 E OFFICE@HULENA.COM
 WWW.HULENA.COM

THE COPYRIGHT TO THESE DRAWINGS AND ALL PARTS THEREOF IS THE PROPERTY OF HULENA ARCHITECTS LIMITED



PIHA SURF LIFE SAVING CLUB • PROPOSED EXTENSIONS

PRELIMINARY CONCEPT ONLY - SUBJECT TO PLANNING ASSESSMENT + LOCAL AUTHORITY APPROVAL

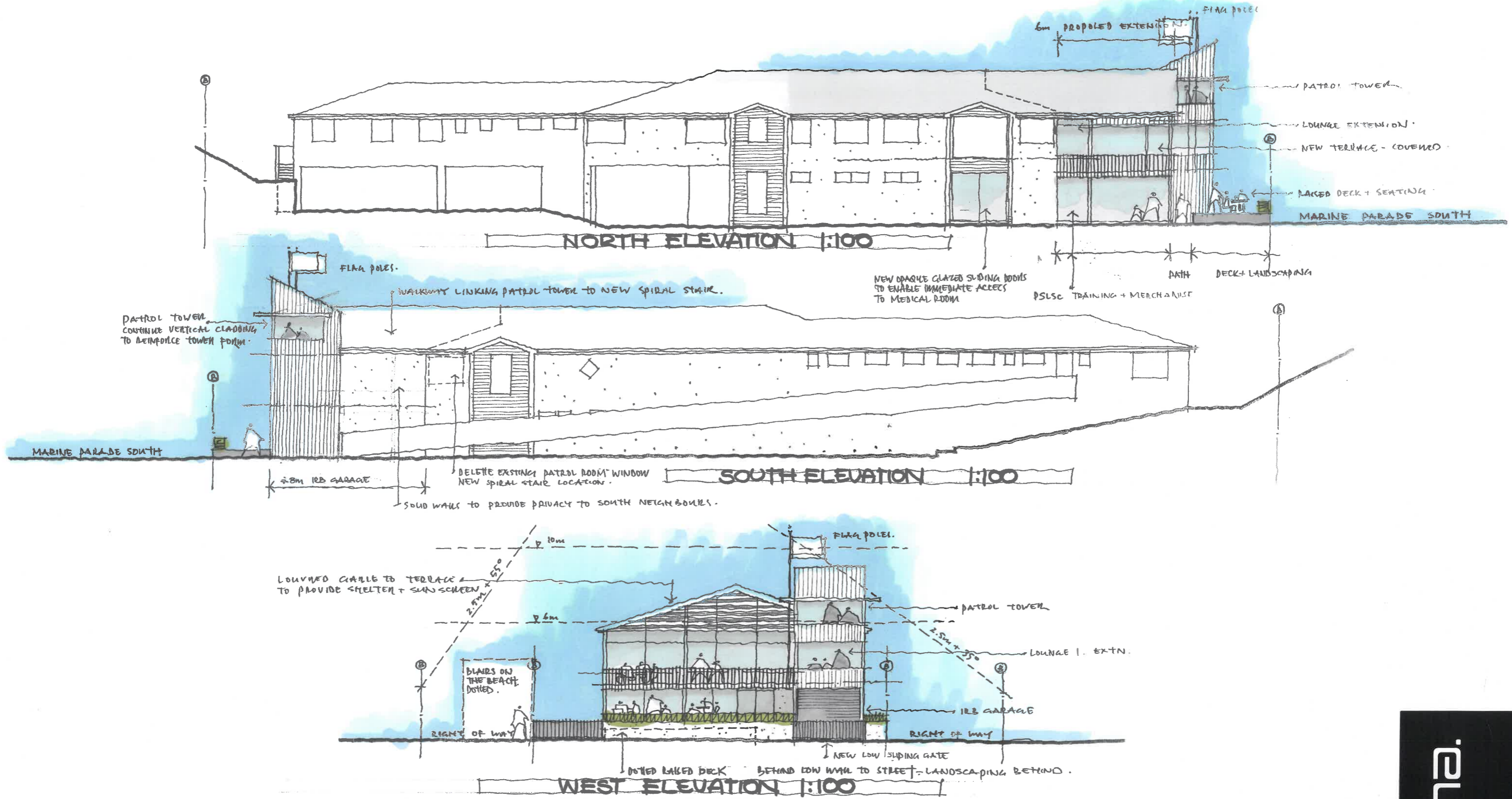
23 MARINE PARADE SOUTH • PIHA • © 10 JUNE 2014

hulena.
 HULENA ARCHITECTS LIMITED
 9 MELROSE STREET
 NEWMARKET
 AUCKLAND
 NEW ZEALAND
 T 09 524 6955
 F 09 520 6522
 E OFFICE@HULENA.COM
 WWW.HULENA.COM

© 18 JUNE 2014
 © 16 JUNE 2014

4798.P1

THE COPYRIGHT TO THESE DRAWINGS AND ALL PARTS THEREOF IS THE PROPERTY OF HULENA ARCHITECTS LTD.



PIHA SURF LIFE SAVING CLUB • PROPOSED EXTENSIONS

PRELIMINARY CONCEPT ONLY - SUBJECT TO PLANNING ASSESSMENT + LOCAL AUTHORITY APPROVAL

23 MARINE PARADE SOUTH - PIHA - 12 JUNE 2014

Ⓟ 18 JUNE 2014
Ⓜ 16 JUNE 2014

hulena.

HULENA ARCHITECTS LIMITED
9 MELROSE STREET
NEWMARKET
AUCKLAND
NEW ZEALAND
T 09 524 6955
F 09 520 6522
E OFFICE@HULENA.COM
WWW.HULENA.COM

4798-P2

THE COPYRIGHT TO THESE DRAWINGS AND ALL PARTS THEREOF IS THE PROPERTY OF HULENA ARCHITECTS LTD.